

All Season Performance

DESIGNED FOR:

ALL WEATHER

PROTECTION

GRIP

TECH HIGHLIGHTS:



DESCRIPTION:

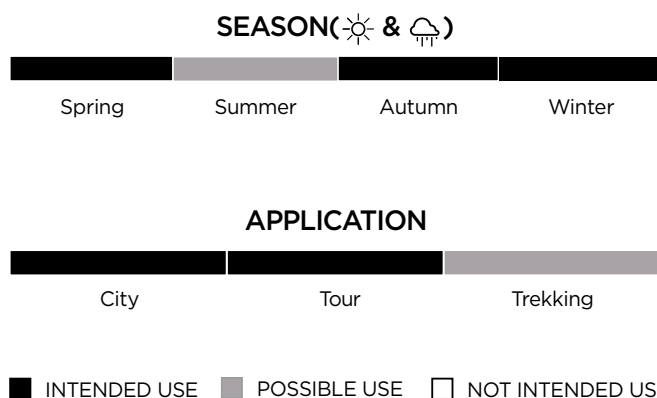
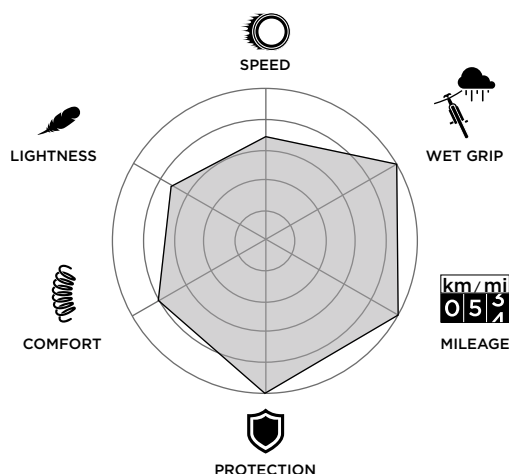
The **Angel WT Urban** was developed specifically for the winter season. It features the **SmartEVO Winter**, a special rubber formulation for wet days and cold temperatures. The tread design takes inspiration from our motorcycle tyres developed for cold asphalt and slick **wet surfaces**, always guaranteeing outstanding puncture protection.

The **TechWALL** casing features high-strength Nylon fabric from bead to bead delivering the highest level of **puncture protection** to safely deal with the uncertain conditions of urban riding.



Motorcycle inspired design
Diablo™ Wet & Rain: The Sport Road tyre with Pirelli sporty DNA.

CHARACTERISTICS:



Developed for Stromer ST models.

DESCRIPTION	RIM	IPCODE	CASING	TECHNOLOGY	WEIGHT	COMPOUND	SRP €	SRP \$	SRP £
Angel™ WT Urban 57-584	25C	4127000	60 tpi, tube Fold	TechWALL	920g	SmartEVO WINTER	84,90 €	99,9 \$	81,99 £

TECHNOLOGY OVERVIEW:

① Compound

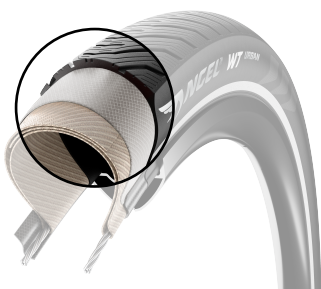


Compound specifically designed for Wet and cold Conditions.



**WET GRIP
RELIABILITY &
DURABILITY**

② Structure

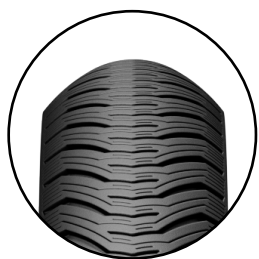


Thick layer of compound on top of a bead to bead Nylon protection layer



**EXCELLENT
PROTECTION
AND COMFORT
ON ANY TYPE
OF TERRAIN**

③ Profile



**MULTIRADIUS
PROFILE**



Sharp in the centre for agile response & more homogeneous on the shoulders



**MAXIMIZED
HANDLING
AND CONTACT
PATCH**

CERTIFICATIONS:



The entire Angel™ Urban range meets the ECE-R75 certification that means the tyres meet European standards specific to the needs of speed e-bikes that go up to 50km/h (31mph).



The reflective stripe meets the approval requirements in the European ECE-R88 regulations that the reflective bands emit a sufficiently visible light even at an unfavourable angle.